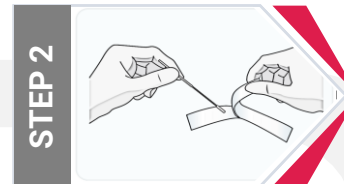


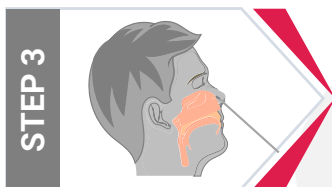
STEP 1

Sanitize your hands then label the tube and bag with your full name, date of birth, and date of collection.



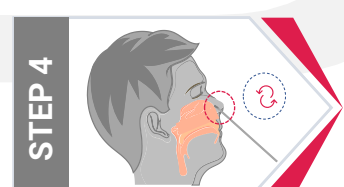
STEP 2

Unwrap nasal swab, being careful not to touch soft side of the swab.



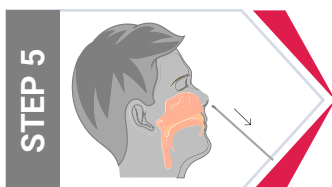
STEP 3

Massage the tip of the nose for 30 seconds insert swab ½ inch into the nose



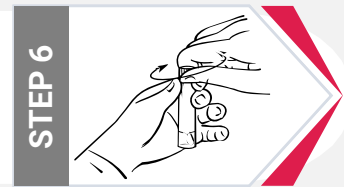
STEP 4

Rotate swab for 10-25 seconds in each nostril.



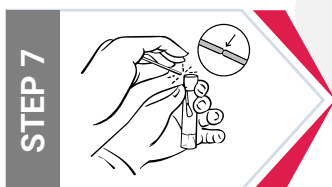
STEP 5

Remove the swab from the nostril.



STEP 6

Unscrew cap without spilling contents of the tube.



STEP 7

Break the tip of the swab into the tube at the score line.



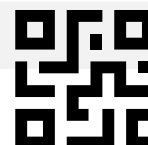
STEP 9

Tightly screw the cap back on the tube. Discard the remaining plastic of the swab.



STEP 10

Place specimen in biohazard bag and return specimen to lab.



Scan QR Code for Instructional Video

Verify the following prior to shipment

1. Name, DOB, and collection date are on the tube
2. The tube cap is sealed properly to prevent leaking

Questions/concerns write to us at care@sdilabsinc.com