

SDA 3.4: Tables

IPUMS CPS samples, 1962-2010

Nov 18, 2010 (Thu 04:29 PM CST)

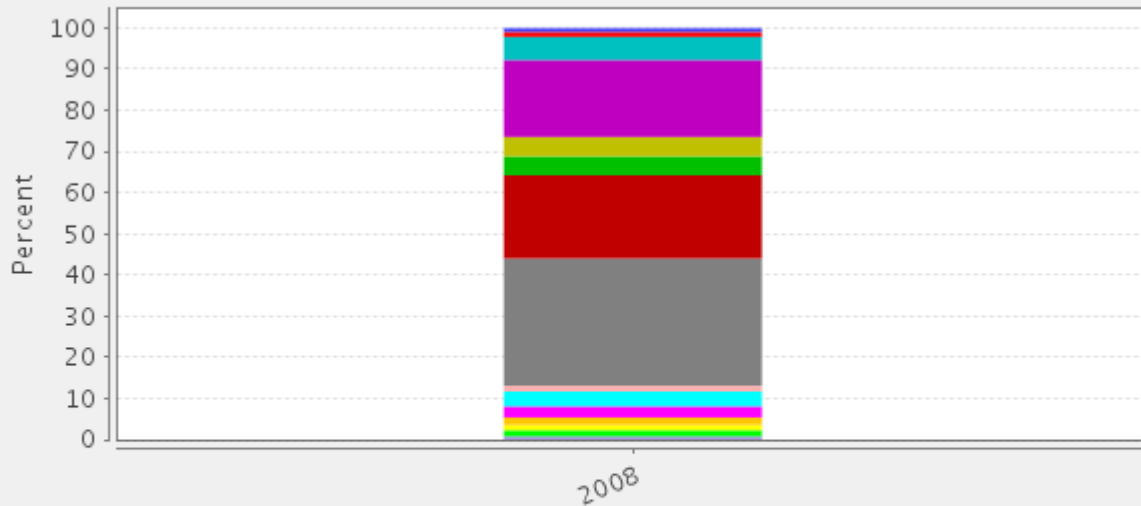
Variables					
Role	Name	Label	Range	MD	Dataset
Row	educ	Educational attainment recode	1-999		1
Column	year	Survey year	1962-2010		1
Weight	perwt	Person weight	-11,366.81-28,722.98		1
Filter	year(2008)	Survey year	1962-2010		1
Filter	classwkr(22)	Class of worker(=Wage/salary, private)	0-99		1

Frequency Distribution			
Cells contain: -Column percent -Weighted N		year	
		2008	ROW TOTAL
educ	2: None, preschool, or kindergarten	.2 206,293.9	.2 206,293.9
	10: Grades 1, 2, 3, or 4	.6 720,898.7	.6 720,898.7
	20: Grades 5 or 6	1.5 1,768,179.6	1.5 1,768,179.6
	30: Grades 7 or 8	1.3 1,532,258.1	1.3 1,532,258.1
	40: Grade 9	1.8 2,136,052.7	1.8 2,136,052.7
	50: Grade 10	2.7 3,134,178.3	2.7 3,134,178.3
	60: Grade 11	3.6 4,190,847.8	3.6 4,190,847.8
	71: 12th grade, no diploma	1.4	1.4

		1,586,755.9	1,586,755.9
73: High school diploma or equivalent		30.9 35,783,380.3	30.9 35,783,380.3
81: Some college but no degree		20.2 23,421,760.1	20.2 23,421,760.1
91: Associate's degree, occupational/vocational program		4.6 5,323,857.6	4.6 5,323,857.6
92: Associate's degree, academic program		4.7 5,492,667.3	4.7 5,492,667.3
111: Bachelor's degree		18.7 21,676,544.2	18.7 21,676,544.2
113: Master's degree		5.6 6,531,141.9	5.6 6,531,141.9
114: Professional school degree		1.2 1,400,365.3	1.2 1,400,365.3
115: Doctorate degree		.9 1,010,768.0	.9 1,010,768.0
<i>COL TOTAL</i>		100.0 115,915,949.6	100.0 115,915,949.6

Color coding:	<-2.0	<-1.0	<0.0	>0.0	>1.0	>2.0	Z
N in each cell:	Smaller than expected			Larger than expected			

Educational attainment recode BY Survey year



- None, preschool, or kindergarten
- Grades 1, 2, 3, or 4
- Grades 5 or 6
- Grades 7 or 8
- Grade 9
- Grade 10
- Grade 11
- 12th grade, no diploma
- High school diploma or equivalent
- Some college but no degree
- Associate's degree, occupational/vocational program
- Associate's degree, academic program
- Bachelor's degree
- Master's degree
- Professional school degree
- Doctorate degree

Allocation of cases (unweighted)

Valid cases	77,007
Cases excluded by filters or weight	7,407,118
<i>Total cases</i>	<i>7,484,125</i>

Datasets

- 1 /share/htdocs/1962-2010
- 2 /sda_support/newvars/1962-2010